

INSTRUCTION SHEET

STROMBERG CARBURETOR—MODEL CD

WITH AUTOMATIC CHOKE

GENERAL EXPLODED VIEW

THE GENERAL DESIGN AND PARTS SHOWN WILL VARY TO
INDIVIDUAL UNITS COVERED ON THIS INSTRUCTION SHEET

DISASSEMBLY

USE EXPLODED VIEW AS A GUIDE. ALWAYS DISASSEMBLE CARBURETORS INDIVIDUALLY AS PARTS SHOULD NOT BE INTERCHANGED. THE NUMERICAL SEQUENCE MAY GENERALLY BE FOLLOWED TO DISASSEMBLE UNIT FAR ENOUGH TO PERMIT CLEANING AND INSPECTION. CAUTION. SUCTION CHAMBER AND PISTON ASSY. ARE PRECISION MADE AND MUST NOT BE TREATED ROUGHLY. DO NOT REMOVE PHILIPS HEAD SCREWS THAT HOLD THROTTLE BY PASS VALVE TOGETHER. REMOVE SLOTTED ONES ONLY TO REMOVE UNITS. DO NOT REMOVE 21 METAL STRIP FROM TEMPERATURE COMPENSATING VALVE (FACTORY ADJ.)

NOMENCLATURE

| REF. NO. | REF. NO. |
|--|---|
| 1. DAMPER PISTON ASSY. | 22. SEAL LINNER, COMPENSATING VALVE |
| 2. GASKET- DAMPER ASSY. | 23. BOLT- CHOKE WATER LOUVER |
| 3. SCREW & LOCKWASHER (4)- SUCTION CHAMBER | 24. GASKET- BOLT |
| 4. CHAMBER- SUCTION | 25. COVER- THROTTLE WATER HOSE |
| 5. SPRING- AIR VALVE RETURN | 26. GASKET- COVER |
| 6. AIR VALVE ASSY. | 27. SCREW & LOCKWASHER (3)- CHOKE COIL RETAINER |
| 7. SCREW- METERING NEEDLE LOCK | 28. RETAINER- CHOKE COIL |
| 8. NEEDLE- METERING | 29. CHOKE COIL ASSY. |
| 9. SCREW (4)- DIAPHRAGM RETAINER | 30. INSULATOR SPACER- CHOKE |
| 10. RETAINER- DIAPHRAGM | 31. SCREW (3)- VACUUM PISTON COVER |
| 11. DIAPHRAGM- AIR VALVE | 32. HOUSING ASSY- CHUVAL |
| 12. SCREW & LOCKWASHER (3)- THROTTLE BY PASS VALVE | 33. SCREW (2)- VACUUM PISTON LOUVER |
| 13. BY PASS VALVE- THROTTLE | 34. COVER- VACUUM PISTON |
| 14. GASKET- BY PASS VALVE | 35. GASKET- COVER |
| 15. NEEDLE- IDLE TRIMMING ADJUSTING | 36. GASKET- CHOKE HOSE ASSY |
| 16. SPRING- ADJUSTING NEEDLE | 37. PLUG- FLOAT CHAMBER |
| 17. SCREW (2)- COMPENSATING VALVE COVER | 38. O-RING- PLUG |
| 18. COVER- COMPENSATING VALVE | 39. SCREW & LOCKWASHER (5)- FLOAT CHAMBER |
| 19. SCREW & LOCKWASHER (2)- COMPENSATING VALVE | 40. SCREW & LOCKWASHER (2)- FLOAT CHAMBER |
| 20. VALVE ASSY.- COMPENSATING | 41. FLOAT CHAMBER |
| 21. SEAL (OUTER)- COMPENSATING VALVE | 42. GASKET- FLOAT CHAMBER |
| | 43. PIN- FLOAT HINGE |
| | 44. FLOAT & HINGE ASSY. |
| | 45. NEEDLE, SEAT AND GASKET ASSY |
| | 46. MAIN BODY ASSY |

CLEANING

CLEANING MUST BE DONE WITH CARBURETOR COMPLETELY DISASSEMBLED. USE A CARBURETOR CLEANING SOLVENT. SOAK PARTS LONG ENOUGH TO SOFTEN AND REMOVE ALL FOREIGN MATERIAL. DO NOT PROLONG SOAKING IN CARBURETOR CLEANER BECAUSE OF RUBBER SEALS THAT ARE NOT REMOVED. MAKE CERTAIN THE THROTTLE BORE IS FREE OF ALL CARBON AND VARNISH DEPOSITS. RINSE OFF IN SUITABLE SOLVENT. BLOW OUT ALL PASSAGES IN CASTINGS WITH COMPRESSED AIR AND CHECK CAREFULLY TO INSURE THOROUGH CLEANING OF OBSCURE AREAS. DO NOT SOAK PARTS CONTAINING DIAPHRAGM, RUBBER OR PLASTIC MATERIALS, SUCH AS (11)(13)(20)(44)

REASSEMBLY

REASSEMBLE IN REVERSE ORDER OF DISASSEMBLY. NOTE SPECIAL INSTRUCTIONS AND FOLLOW NUMERICAL OUTLINE IN MAKING ADJUSTMENTS.

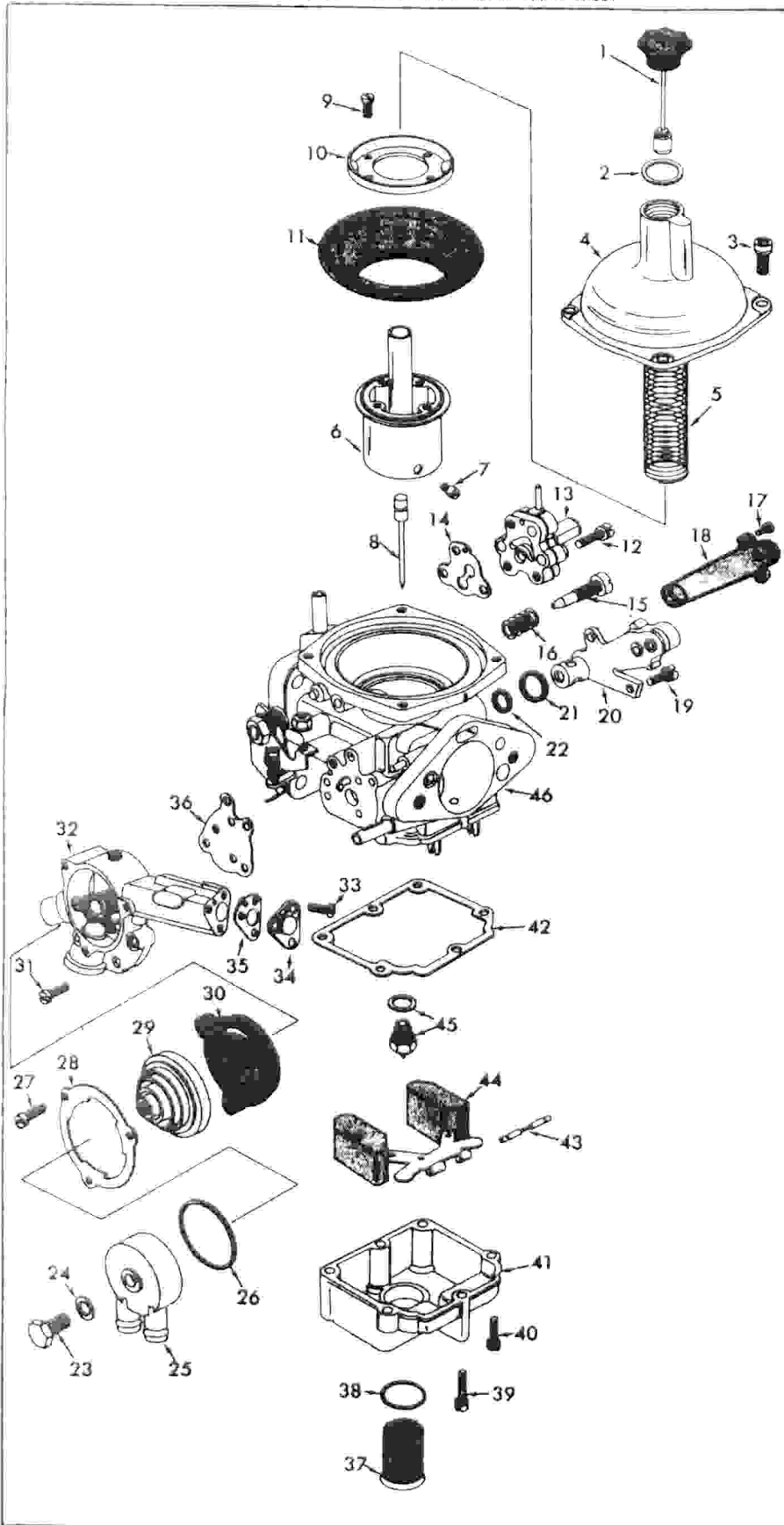
SPECIAL INSTRUCTIONS

LIGHTLY LUBRICATE O-RINGS BEFORE ASSEMBLING.

IDLE TRIMMING SCREW (15)- TURN IN UNTIL TIGHTLY SEATED ONLY USED WHEN FINE IDLE ADJUSTMENT IS MADE WITH ID METER.

DIAPHRAGM MOUNTING (11)- BE SURE LOCATING LIP ENGAGES CORRESPONDING RECESS IN PISTON AND INNER EDGE FITS EASILY INTO MATCHING GROOVE OF PISTON. CAREFUL NOT TO TWIST DIAPHRAGM WHEN TIGHTENING SCREWS. WHEN INSTALLING COMPLETE ASSY. IN MAIN BODY BE SURE THAT OUTER LOCATING LIP OF DIAPHRAGM ENGAGES MATCHING RECESS IN HOUSING.

PISTON ASSY. (6)- LUBRICATE PISTON ROD LIGHTLY BEFORE INSTALLING. (LUBRICATE NO OTHER PART OF PISTON.)



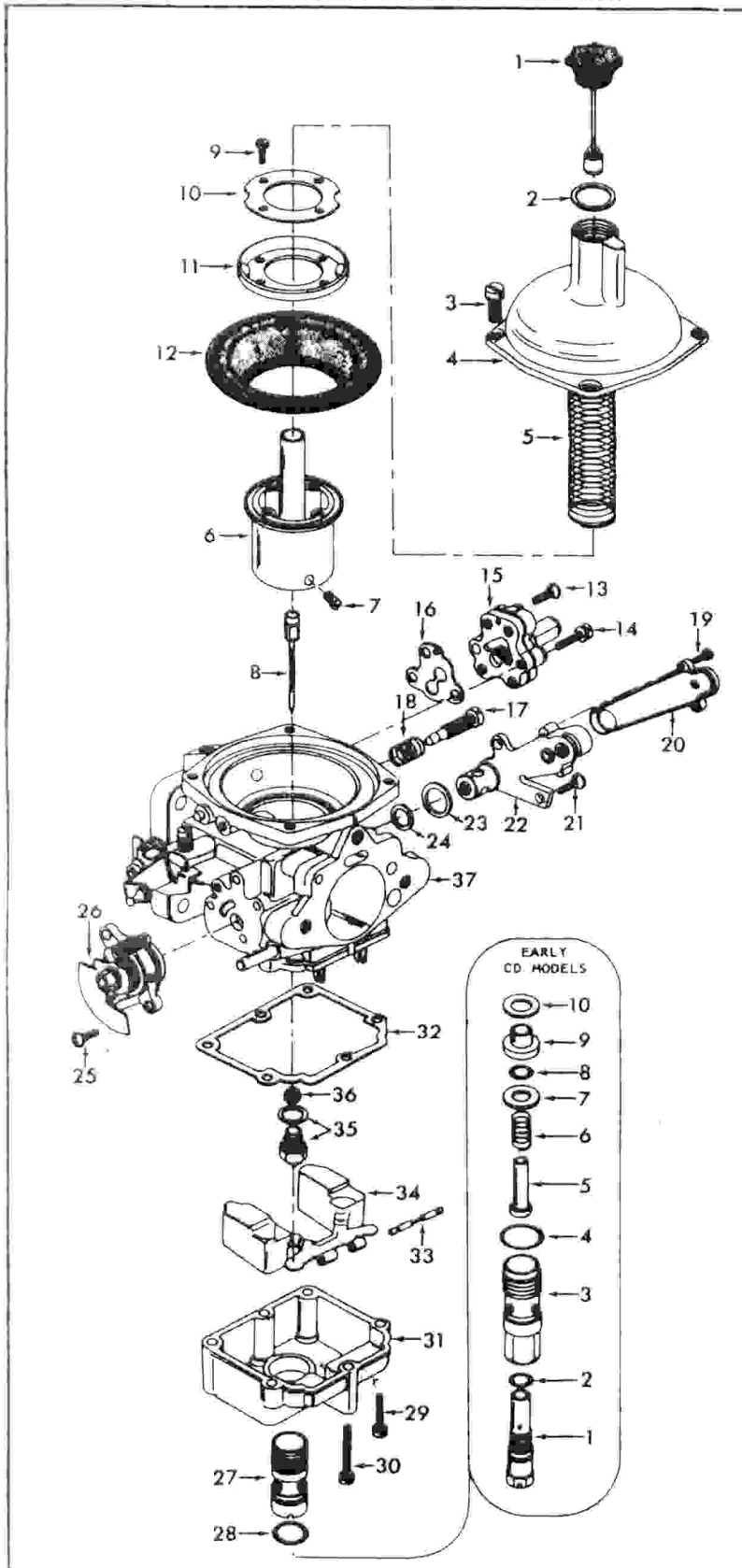
INSTRUCTION SHEET

(ZENITH) STROMBERG CARBURETOR — MODEL CD, CDSE

50-487-1

GENERAL EXPLODED VIEW

THE GENERAL DESIGN AND PARTS SHOWN WILL VARY TO
INDIVIDUAL UNITS COVERED ON THIS INSTRUCTION SHEET.



DISASSEMBLY

USE EXPLODED VIEW AS A GUIDE. ALWAYS DISASSEMBLE CARBURETORS INDIVIDUALLY AS PARTS SHOULD NOT BE INTERCHANGED. THE NUMERICAL SEQUENCE MAY GENERALLY BE FOLLOWED TO DISASSEMBLE UNIT FAR ENOUGH TO PERMIT CLEANING AND INSPECTION. CAUTION: SUCTION CHAMBER AND PISTON ASSY. ARE PRECISION MADE AND MUST NOT BE TREATED ROUGHLY. DO NOT REMOVE PHILIPS HEAD SCREWS THAT HOLD THROTTLE BY PASS VALVE TOGETHER. REMOVE SLOTTED ONES ONLY TO REMOVE UNIT. DO NOT REMOVE BI METAL STRIP FROM TEMPERATURE COMPENSATOR VALVE. (FACTORY ADJ.)

NOMENCLATURE

| REF. NO. | REF. NO. |
|---|---|
| 1. DAMPER PISTON ASSY. | 24. SEAL (INNER) - COMPENSATING VALVE |
| 2. GASKET - DAMPER ASSY. | 15. SCREW & LOCKWASHER (2) - STARTING VALVE |
| 3. SCREW & LOCKWASHER (4) SUCTION CHAMBER | 26. VALVE ASSY. - STARTING |
| 4. CHAMBER - SUCTION | 27. JET COVER |
| 5. SPRING - AIR VALVE RETURN | 28. O-RING - JET COVER |
| 6. AIR VALVE ASSY. | 29. SCREW & LOCKWASHER (2) - FLOAT CHAMBER |
| 7. SCREW - METERING NEEDLE LOCK | 30. SCREW & LOCKWASHER (4) - FLOAT CHAMBER |
| 8. NEEDLE - METERING | 31. GASKET - FLOAT CHAMBER |
| 9. SCREW (4) - DIAPHRAGM RETAINER | 32. PIN - FLOAT HINGE |
| 10. RETAINER - DIAPHRAGM | 34. FLOAT & HINGE ASSY. |
| 11. RETAINER RING - DIAPHRAGM | 35. NEEDLE, SEAT & GASKET ASSY. |
| 12. DIAPHRAGM - AIR VALVE | 16. SCREEN - FUEL FILTER |
| 13. SCREW & LOCKWASHER (SLOTTED) - THROTTLE BY PASS VALVE | 17. MAIN BODY ASSY. |
| 14. SCREW & LOCKWASHER (2) SLOTTED THROTTLE BY PASS VALVE | |
| 15. BY PASS VALVE - THROTTLE | EARLY CD MODELS |
| 16. GASKET - BY PASS VALVE | 1. SCREW - ADJUSTING DRIFICE |
| 17. NEEDLE - IDLE TRIMMING | 2. O-RING - ADJUSTING SCREW |
| 18. SPRING - ADJUSTING NEEDLE | 3. BUSHING RETAINING SCREW |
| 19. SCREW (2) - COMPENSATING VALVE COVER | 4. O-RING - BUSHING SCREW |
| 20. COVER - COMPENSATING VALVE | 5. JET - ORIFICE |
| 21. SCREW & LOCKWASHER (2) - COMPENSATING VALVE | 6. SPRING - JET ORIFICE |
| 22. VALVE ASSY. - COMPENSATING | 7. WASHER - O-RING |
| 23. SEAL (OUTER) - COMPENSATING VALVE | 8. O-RING - JET SEAL |
| | 9. BUSHING - JET ORIFICE |
| | 10. WASHER - BUSHING |

CLEANING

CLEANING MUST BE DONE WITH CARBURETOR COMPLETELY DISASSEMBLED. USE A CARBURETOR CLEANING SOLVENT. SOAK PARTS LONG ENOUGH TO SOFTEN AND REMOVE ALL FOREIGN MATERIAL. DO NOT PROLONG SOAKING IN CARBURETOR CLEANER BECAUSE OF RUBBER SEALS THAT ARE NOT REMOVED. MAKE CERTAIN THE THROTTLE BORE IS FREE OF ALL CARBON AND VARNISH DEPOSITS. RINSE OFF IN SUITABLE SOLVENT. BLOW OUT ALL PASSAGES IN CASTINGS WITH COMPRESSED AIR AND CHECK CAREFULLY TO INSURE THOROUGH CLEANING OF OBSCURE AREAS. DO NOT SOAK PARTS CONTAINING DIAPHRAGM, RUBBER OR PLASTIC MATERIALS, SUCH AS (12)(15)(22)(34).

REASSEMBLY

REASSEMBLE IN REVERSE ORDER OF DISASSEMBLY. NOTE SPECIAL INSTRUCTIONS AND FOLLOW NUMERICAL OUTLINE IN MAKING ADJUSTMENTS.

SPECIAL INSTRUCTIONS

LIGHTLY LUBRICATE O-RING BEFORE ASSEMBLING.

IDLE TRIMMING SCREW (17) - TURN IN UNTIL LIGHTLY SEATED. ONLY USED WHEN FINE IDLE ADJUSTMENT IS MADE WITH CO METER.

DIAPHRAGM MOUNTING (12) - BE SURE LOCATING LIP ENGAGES CORRESPONDING RECESS IN PISTON AND INNER EDGE FITS EASILY INTO MATCHING GROOVE OF PISTON. CAREFUL NOT TO TWIST DIAPHRAGM WHEN TIGHTENING SCREWS. WHEN INSTALLING COMPLETE ASSY. IN MAIN BODY BE SURE THAT OUTER LOCATING LIP OF DIAPHRAGM ENGAGES MATCHING RECESS IN HOUSING.

PISTON ASSY. (6) - LUBRICATE PISTON ROD LIGHTLY BEFORE INSTALLING. (LUBRICATE NO OTHER PART OF PISTON.)

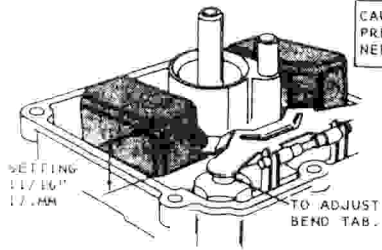
CHOKE LIMITING SPINDLE ADJUSTMENT - WINTER SETTING, STOP CROSS PIN IN HORIZONTAL SLOT IN CASTING. SUMMER SETTING, DEPRESS SPRING LOADED PIN AND TURN 90°.

CD MODELS WITH MIXTURE ADJUSTING SCREW

AIR VALVE SETTING ON BRIDGE OF THROTTLE BORE. TURN MIXTURE SCREW (1) IN UNTIL IT JUST TOUCHES AIR VALVE, THEN BACK OUT 3 TURNS. (BASIC SETTING). WHEN ENGINE IS STARTED AND REACHES OPERATING TEMPERATURE. ADJUST IDLE STOP SCREW TO 600-650 R.P.M. CHECK MIXTURE BY USING A SCREWDRIIVER TO RAISE AIR VALVE SLIGHTLY. IF ENGINE R.P.M. INCREASES MIXTURE IS TOO RICH. IF IT STOPS, IT IS TOO LEAN. ENGINE R.P.M. SHOULD REMAIN THE SAME OR FALL SLIGHTLY ON LIFTING AIR VALVE. TO ADJUST TURN MIXTURE SCREW, CLOCKWISE IS LEANER AND COUNTERCLOCKWISE IS RICHER.

ADJUSTMENTS

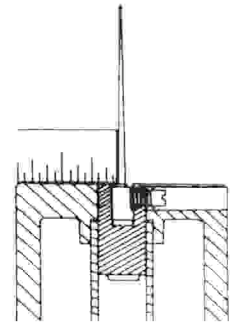
CARBURETOR INVERTED. (BOWL GASKET REMOVED) MEASURE DISTANCE FROM GASKET SURFACE OF CARBURETOR BODY TO HIGHEST POINT OF EACH FLOAT.



DRY FLOAT LEVEL ADJUSTMENT

FIG. 1

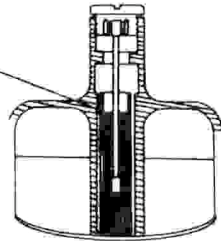
INSTALL NEEDLE WITH FLAT SIDE OF BUSHING FACING SET SCREW ALIGN SHOULDER OR PLASTIC WASHER OF NEEDLE BUSHING WITH FLAT SURFACE OF AIR VALVE AND TIGHTEN SET SCREW. (DO NOT OVERTIGHTEN)



METERING NEEDLE POSITION

FIG. 2

FILL WITH SUITABLE OIL TO WITHIN 1/4" OF END OF ROD.



HYDRAULIC DAMPER (OIL LEVEL)

FIG. 3