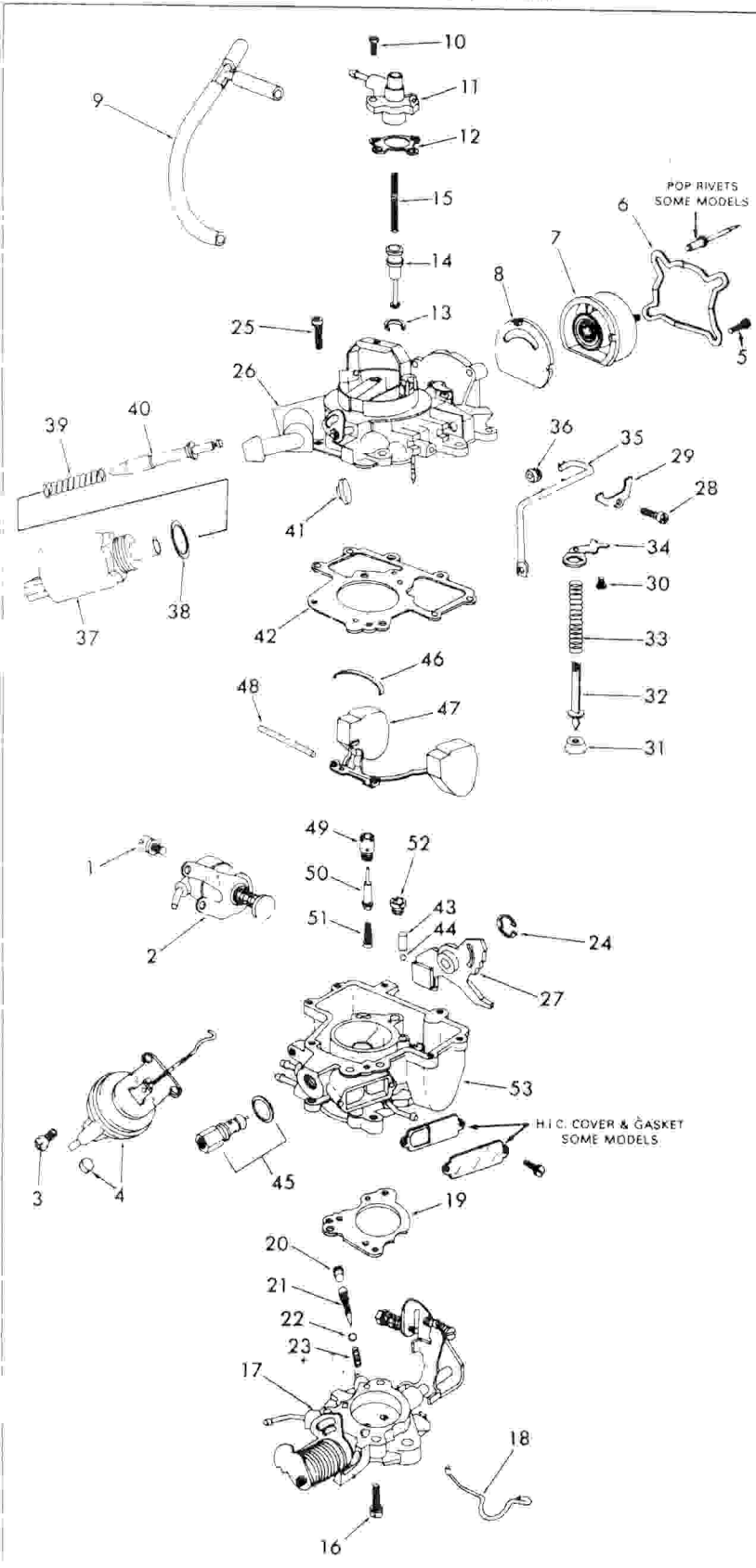


# INSTRUCTION SHEET

## HOLLEY CARBURETOR- MODEL 1946

50-581-3

**GENERAL EXPLODED VIEW**  
THE GENERAL DESIGN AND PARTS SHOWN WILL VARY TO INDIVIDUAL UNITS COVERED ON THIS INSTRUCTION SHEET



### DISASSEMBLY

USE THE EXPLODED VIEW AS A GUIDE. THE NUMERICAL SEQUENCE MAY GENERALLY BE FOLLOWED TO DISASSEMBLE UNIT FAR ENOUGH TO PERMIT CLEANING AND INSPECTION. WHEN POP RIVETS ARE USED ON CHOKE COVER RETAINER, DRILL RIVET HEAD JUST ENOUGH TO COME LOOSE FROM RIVET BODY USING A SMALL PUNCH. DRIVE REMAINING RIVET OUT OF HOLE. REMOVE STAKING FROM POWER PISTON HOUSING FOR EASY REMOVAL OF POWER PISTON RETAINING WASHER (13). TO REMOVE TAMPER RESISTANT IDLE MIXTURE PLUG (20) AND CHOKE PULLDOWN MOTOR PLUG (44) CENTER PUNCH AND DRILL A 3/32" DIA. HOLE THROUGH THE HARDENED STEEL PLUG. INSTALL AN EASY-OUT INTO THE HOLE AND REMOVE PLUG. BEFORE REMOVING IDLE MIXTURE NEEDLE USING THE PROPER WRENCH, TURN IDLE ADJUSTING NEEDLE IN COUNTING THE NUMBER OF TURNS IT TAKES TO LIGHTLY SEAT THE NEEDLE (RECORD FOR REASSEMBLY). TO REMOVE VENT VALVE STEM (40), PULL IT OUT OF THE RUBBER VENT VALVE (41). MAIN WELL TUBE IS NOT REMOVABLE. TAKE EXTREME CARE NOT TO BEND OR DAMAGE TUBE.

### NOMENCLATURE

REF NO	REF NO
1	26
2	27
3	28
4	29
5	30
6	31
7	32
8	33
9	34
10	35
11	36
12	37
13	38
14	39
15	40
16	41
17	42
18	43
19	44
20	45
21	46
22	47
23	48
24	49
25	50
	51
	52
	53

### CLEANING

CLEANING MUST BE DONE WITH CARBURETOR DISASSEMBLED. SOAK PARTS LONG ENOUGH TO SOFTEN AND REMOVE ALL FOREIGN MATERIAL. USE A CARBURETOR CLEANING SOLVENT. MAKE CERTAIN THE THROTTLE BORES ARE FREE OF ALL CARBON AND VARNISH DEPOSITS. RINSE OFF IN A SUITABLE SOLVENT. BLOW OUT ALL PASSAGES IN CASTINGS WITH COMPRESSED AIR, AND CHECK CAREFULLY TO INSURE THOROUGH CLEANING OF OBSCURE AREAS. CAUTION DO NOT SOAK SOLENOIDS (21-37), CHOKE PULLOFF (41), ELECTRIC CHOKE ASSY (17), FLOAT (47), OR PARTS MADE OF RUBBER IN CLEANING SOLVENT.

### REASSEMBLY

REASSEMBLE IN REVERSE ORDER OF DISASSEMBLY. NOTE SPECIAL INSTRUCTIONS AND FOLLOW NUMERICAL OUTLINE IN MAKING ADJUSTMENTS NECESSARY FOR CARBURETOR BEING SERVICED.

### SPECIAL INSTRUCTIONS

VENT VALVE (41) — TO INSTALL, DROP VENT VALVE INTO PLACE. LUBE END OF VENT VALVE STEM (40). CAREFULLY INSERT THE STEM INTO THE HOLE OF THE VALVE AND PUSH STEM UNTIL IT SNAPS INTO THE SEAT OF THE VALVE.

PUMP SPRING (33) — INSTALL WITH SMALL END TOWARDS PUMP CUP.

BOWL COVER SCREWS (25) — TORQUE TO 20-INCH LBS.

IDLE ADJ NEEDLE (21) — TURN IN UNTIL LIGHTLY SEATED. THEN BACK OUT NUMBER OF TURNS RECORDED ON DISASSEMBLY. INSTALL PLUG (20) AFTER COMPLETING ALL RUNNING IDLE ADJUSTMENTS ON CAR.

THROTTLE BODY SCREWS (18) — TORQUE TO 30-INCH LBS.

VACUUM POWER-PISTON RETAINER (13) — LIGHTLY STAKE CASTING AROUND WASHER.

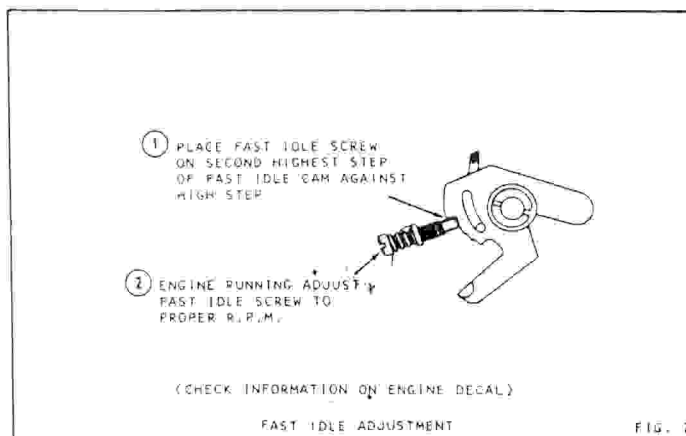
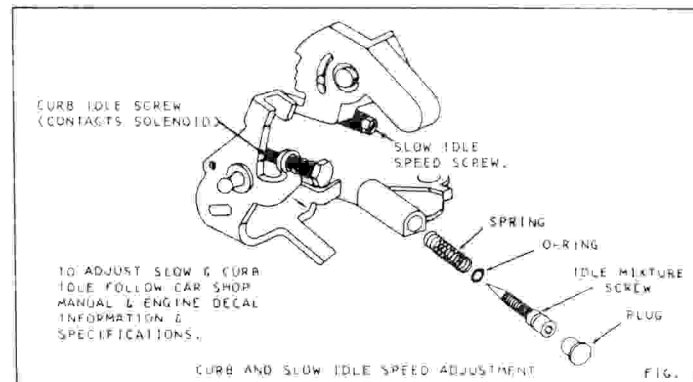
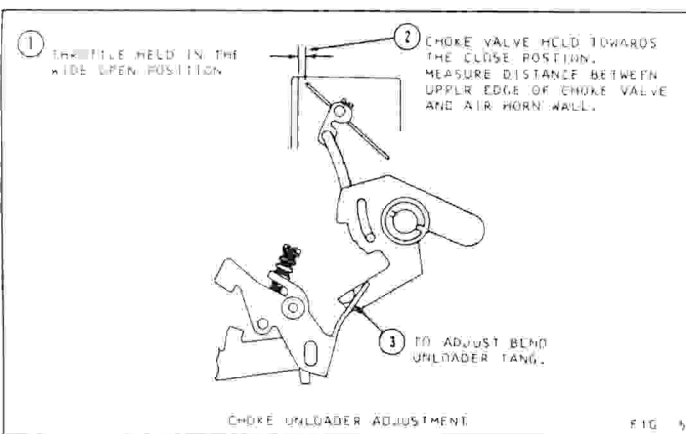
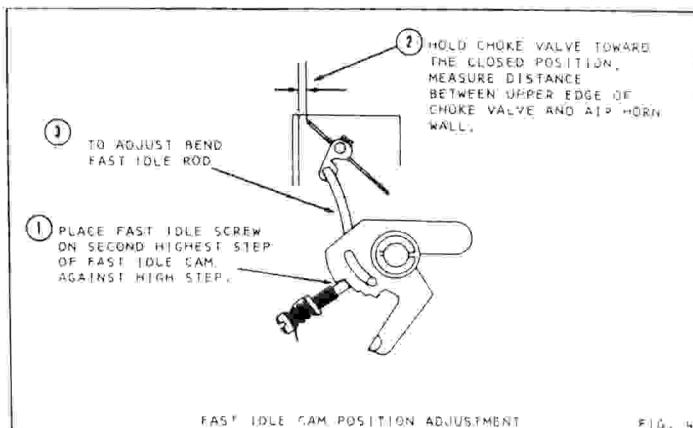
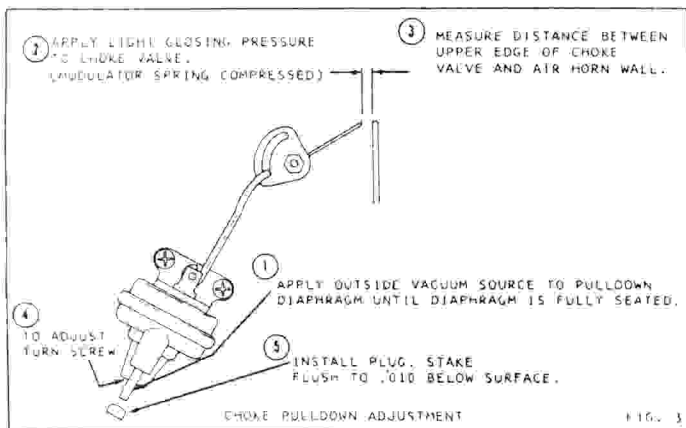
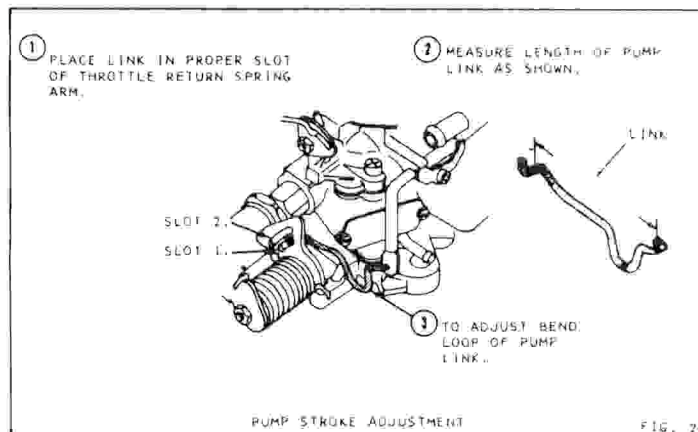
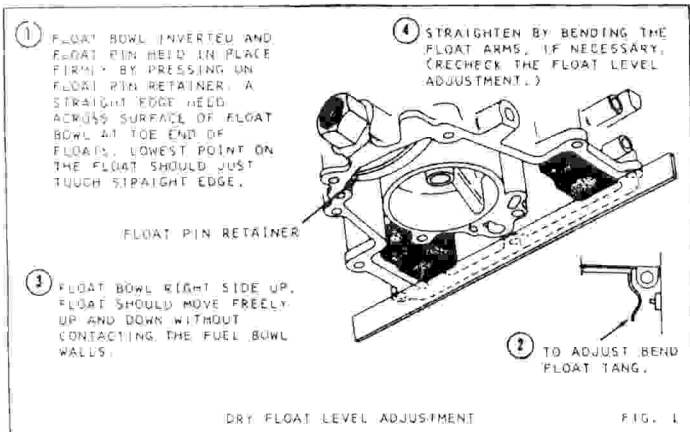
ELECTRIC CHOKE COIL ASSY (7) HAS A FIXED SETTING, IS NOT ADJUSTABLE. INSTALL POP RIVETS IN PROPER HOLES ON UNITS WHERE RIVETS WERE REMOVED.

### NOTICE

THE INFORMATION AND SPECIFICATIONS CONTAINED HEREIN ARE BASED ON LATEST PRODUCT INFORMATION AVAILABLE AT THE TIME OF PUBLICATION. THE RIGHT IS RESERVED TO MAKE CHANGES AT ANY TIME WITHOUT NOTICE.

PLEASE REFER TO THE ENGINE DECAL SERVICE SPECIFICATIONS AND TECHNICAL BULLETINS FOR REVISIONS TO THIS INFORMATION.

# ADJUSTMENTS



ADJUSTMENT DATA TABLE

YEAR	APPLICATION FORD PRODUCTS	DRY FLOAT LEVEL	PUMP ADJUSTMENT ROD SLOT	LENGTH	CHOKE - PULLDOWN SETTING	FAST IDLE CAM SETTING	CHOKE UNLOADER SETTING
1980	200" ENG CALIF CARB NO E0BE-AAA, ZA	FIG. 1	1	2 25/64"	115"	090"	150"
	200" ENG 49S						
	CARB NO E0BE-AA, CA, AMA, ALA	FIG. 1	2	2 25/64"	100"	070"	150"
	CARB NO E0ZE-DA, EA, CARB NO E0ZE-FA, GA, BAA, BBA	FIG. 1	2	2 25/64"	110"	070"	150"
1981	200" ENG 50 S						
	CARB NO E1BE-AFA, AKA, E1BE-ARA, ASA	FIG. 1	2	2 25/64"	113"	082"	150"
	CARB NO E1BE-AGA	FIG. 1	2	2 25/64"	120"	086"	150"
	200" ENG CANADA						
	CARB NO E0BE-AA, CA, CARB NO E0ZE-BAA, BBA	FIG. 1	2	2 25/64"	100"	070"	150"
	FIG. 1	2	2 25/64"	120"	086"	150"	
1982	200" ENG 50 S						
	CARB NO E2BE-BA, CA	FIG. 1	2	2 25/64"	110"	078"	150"
	200" ENG CANADA						
	CARB NO E2BE-BA, CA	FIG. 1	2	2 25/64"	110"	078"	150"
	CARB NO E2BE-BA, JA, E2BE-EA	FIG. 1	2	2 25/64"	110"	078"	150"
	FIG. 1	2	2 25/64"	120"	086"	150"	
1983	200" ENG ALTITUDE						
	CARB NO E2BE-SA, TA	FIG. 1	2	2 25/64"	110"	078"	150"
	200" ENG 49S						
	CARB NO E3SE-CA, DA	FIG. 1	2	2 9/32"	105"	078"	150"
	CARB NO E3DE-CA, DA	FIG. 1	2	2 9/32"	105"	078"	150"
1984	200" ENG CALIF						
	CARB NO E3SE-AA, BA	FIG. 1	2	2 25/64"	105"	078"	150"