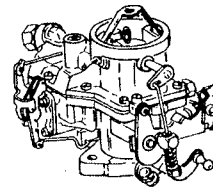
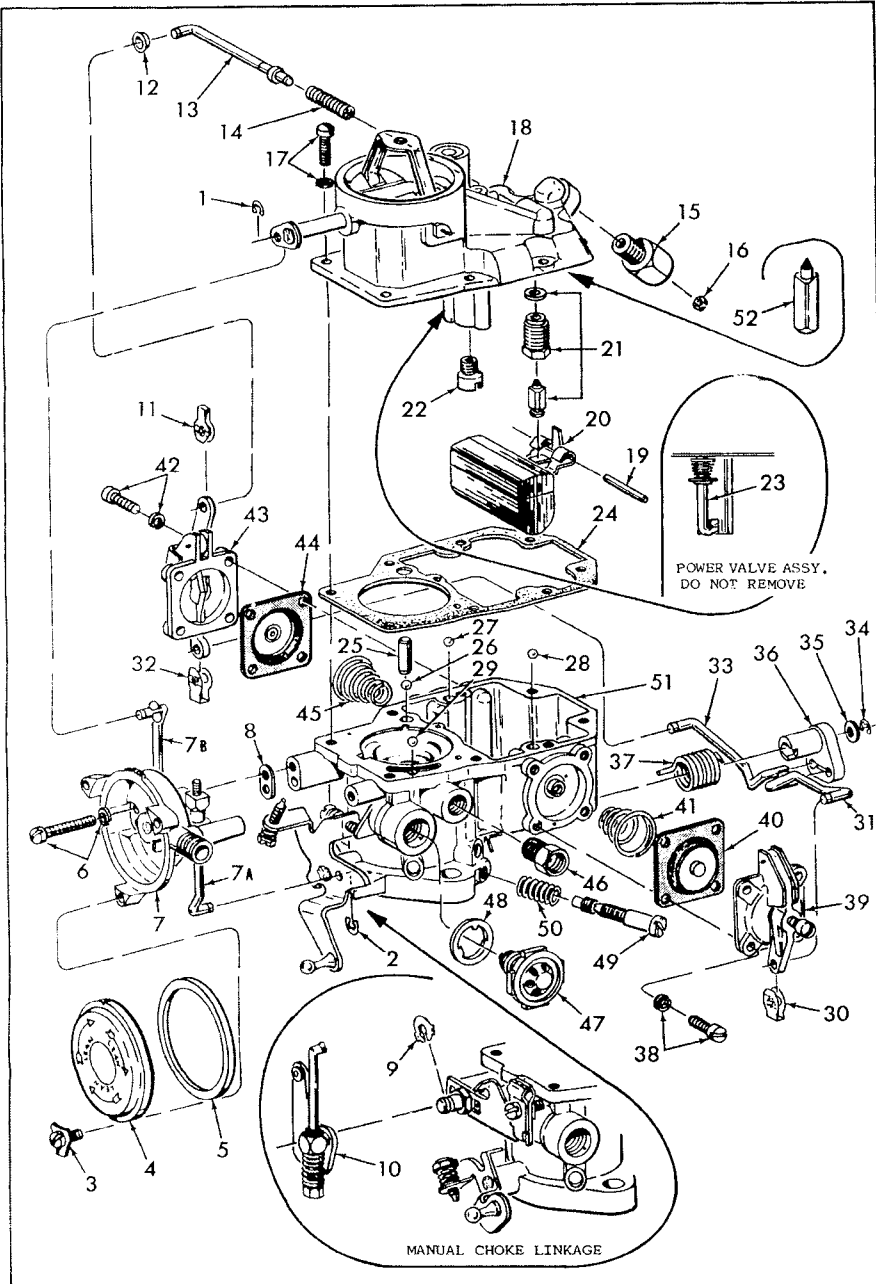


INSTRUCTION SHEET FORD CARBURETOR—MODEL F-1

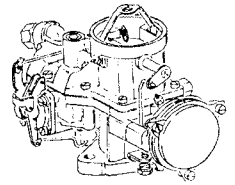
50-465-1

GENERAL EXPLODED VIEW

THE GENERAL DESIGN AND PARTS SHOWN WILL VARY TO INDIVIDUAL UNITS COVERED ON THIS INSTRUCTION SHEET



HAND CHOKE TYPE



AUTOMATIC CHOKE TYPE

DISASSEMBLY

USE EXPLODED VIEW AS A GUIDE. THE NUMERICAL SEQUENCE MAY GENERALLY BE FOLLOWED TO DISASSEMBLE UNIT FAR ENOUGH TO PERMIT CLEANING AND INSPECTION.
NOTE: PRY OUT VENT VALVE BUSHING NO. 12 CAREFULLY BEFORE REMOVING. DO NOT REMOVE POWER VALVE, NO. 23.

NOMENCLATURE

| REF. NO. | REF. NO. |
|----------|----------|
| 1. | 25. |
| 2. | 26. |
| 3. | 27. |
| 4. | 28. |
| 5. | 29. |
| 6. | 30. |
| 7. | 31. |
| 7A. | 32. |
| 7B. | 33. |
| 8. | 34. |
| 9. | 35. |
| 10. | 36. |
| 11. | 37. |
| 12. | 38. |
| 13. | 39. |
| 14. | 40. |
| 15. | 41. |
| 16. | 42. |
| 17. | 43. |
| 18. | 44. |
| 19. | 45. |
| 20. | 46. |
| 21. | 47. |
| 22. | 48. |
| 23. | 49. |
| 24. | 50. |
| | 51. |
| | 52. |

CLEANING

CLEANING MUST BE DONE WITH CARBURETOR DISASSEMBLED. SOAK PARTS LONG ENOUGH TO SOFTEN AND REMOVE ALL FOREIGN MATERIAL. USE (1) CARBURETOR CLEANING SOLVENT, (2) LACQUER THINNER OR (3) DENATURATED ALCOHOL. MAKE CERTAIN THE THROTTLE BODY IS FREE OF ALL HARD CARBON DEPOSITS. WASH OFF IN SUITABLE SOLVENT. BLOW OUT CAREFULLY ALL PASSAGES IN CASTINGS WITH COMPRESSED AIR. CHECK POWER VALVE FOR FREE MOVEMENT OF POWER PISTON, ROD AND CHECK BALL.

CAUTION:

DO NOT SOAK FLOAT OR ANY PARTS CONTAINING RUBBER OR LEATHER IN CLEANING SOLVENT.

REASSEMBLY

REASSEMBLY IS ESSENTIALLY THE REVERSE OF DISASSEMBLY. PAYING PARTICULAR ATTENTION TO SPECIAL INSTRUCTIONS. WHEN MAKING ADJUSTMENTS, FOLLOW NUMERICAL SEQUENCE AS OUTLINED ON OTHER SIDE.

ADJUSTMENT DATA TABLE

| Year Make | Float Level | Pump Lever | Auto. Choke | Choke Valve Pull-Down | Slow Idle R.P.M. | Fast Idle Adj. | |
|--|-----------------------------------|---------------------------------|-------------------------------------|---|---|--|--|
| 1963-69 6 cyl. F-1 Ford Carb. | J" W/Rubber Float | 3/16" | INDEX (See fig. 4) | 3/8" M/C | 144" Eng. 170" Eng. 223" Econ. Eng. 200" Eng. 1963 240" Eng. S/T & A/T 300" Eng. S/T & A/T | Std. Trans. 500-550 | Off Eng. .024 |
| | | | | | | Auto. Trans. in Drive 500-550 | 1963-64 |
| | 1 3/32" W/Metal Float | 7/32" 240" Eng. 300" Eng. | 1968-69 3 Lean A/T 1 Lean S/T | 5/16" M/C | 200" Eng. A/T 262" Eng. Trk. | Trucks 500-600 | On Eng. R.P.M. 1300 S/T 1500 A/T |
| | | | | | | 1968-69 A/T 1600 S/T 1400 Screw on Center Step of Cam | 1968-69 A/T 1600 S/T 1400 Screw on Center Step of Cam |
| | 1968-69 240" Eng. 250" Eng. | | 5/32" A/C | 144" Eng. S/T & A/T 170" Eng. S/T & A/T 200" Eng. S/T & A/T | A/T 525 Dr. in Drive S/T 725 Headlights on H/Beam | ON INSTALLING AUTOMATIC CHOKE STAT COVER, BE SURE LOOP ON STAT SPRING IS HOOKED ON TO CHOKE LEVER. | |
| | | | 7/32" A/C | 240" Eng. S/T & A/T 250" Eng. S/T & A/T | | ACCELERATING PUMP VARIATIONS, ABOVE 50° F AND/OR 5000 FEET ALTITUDE USE LO. POSITION, 50° F AND BELOW, USE HI. POSITION. | |

SPECIAL INSTRUCTIONS

CHECK EXPLODED VIEW FOR PROPER LOCATION OF CHECK BALLS AND BALL WEIGHT.

ON INSTALLING BOWL COVER GASKET, BE SURE ALL HOLES LINE UP WITH PASSAGES IN BOWL.

WHEN INSTALLING THE IDLE ADJUSTING NEEDLE, LIGHTLY BOTTOM. 1963, BACK OUT 3 TO 4 TURNS, 1964, 1 TO 1-1/2 TURNS.

ON INSTALLING AUTOMATIC CHOKE STAT COVER, BE SURE LOOP ON STAT SPRING IS HOOKED ON TO CHOKE LEVER.

ACCELERATING PUMP VARIATIONS, ABOVE 50° F AND/OR 5000 FEET ALTITUDE USE LO. POSITION, 50° F AND BELOW, USE HI. POSITION.

ADJUSTMENTS

