

instruction sheet

Carter Carburetor Model: YF

TYPICAL VIEW

The exploded view shown is typical of the model carburetor this kit will service. The view may differ slightly from the actual carburetor being renewed. Parts included in this kit are circled in red. This is a universal kit that may contain more parts than are actually required to service a given carburetor. When similar gaskets or parts are included in the kit, compare with original parts.

DISASSEMBLY

Rest the carburetor on a repair stand to avoid damage to the throttle plate during renew procedures. Use exploded view as a guide, and follow the numerical sequence in general to disassemble unit far enough to permit cleaning and inspection. Prior to removing idle adjustment needle, turn in until lightly seated counting and recording the number of turns. This procedure is necessary for initial idle adjustment setting after renewing.

NOMENCLATURE

REF. NO.	REF. NO.
1. Choke cover clamp screw	24. Pump stem spacer
2. Choke cover clamp	25. Pump diaph. spring retainer
3. Choke cover & bi-metal assembly	26. Pump diaphragm spring
4. Choke cover gasket	27. Pump intake strainer
5. Choke baffle plate	28. Pump diaph. & stem assy.
6. Choke trip lever	29. Pump intake check ball retainer
7. Choke rod retainer	30. Pump intake check ball
8. Choke rod	31. Pump cover
9. Long airhorn screw & lockwasher	32. Low speed jet
10. Short airhorn screw & lockwasher	33. Metering rod jet
11. Airhorn assembly	34. Metering rod jet gasket
12. Airhorn gasket	35. Check ball weight
13. Float lever pin	36. Check ball
14. Float & lever assembly	37. Throttle body screw & lockwasher
15. Inlet needle, seat & gasket	38. Throttle body screw & lockwasher
16. Upper pump spring retainer	39. Fuel bowl assembly
17. Upper pump spring	40. Throttle body gasket
18. Metering rod arm assembly	41. Throttle stop screw
19. Metering rod	42. Idle adj. needle
20. Pump connector link	43. Idle adj. needle spring
21. Throttle shaft arm assy.	44. Throttle body assembly
22. Pump lifter link	
23. Pump cover screw & lockwasher	

CLEANING

Cleaning must be done with carburetor disassembled. Soak parts long enough to soften and remove all foreign materials. Use a carburetor solvent, lacquer, thinner or denatured alcohol. Make certain the throttle body is free of all hard carbon deposits. Wash off in suitable solvent. Blow out all passages in castings with compressed air and check carefully to insure thorough cleaning of obscure areas.

CAUTION: Do not soak parts containing rubber or plastic material. Serious damage could result.

REASSEMBLY

Reassemble in reverse order of disassembly. Note special instructions and follow outline in making adjustments. Manually operate the throttle lever and choke mechanism, checking for binding or interference could cause throttle to stick during operation and could result in loss of carburetor throttle control (or uncontrolled engine speed). Check carburetor to be sure there are no leaks or flooding which might cause a fire.

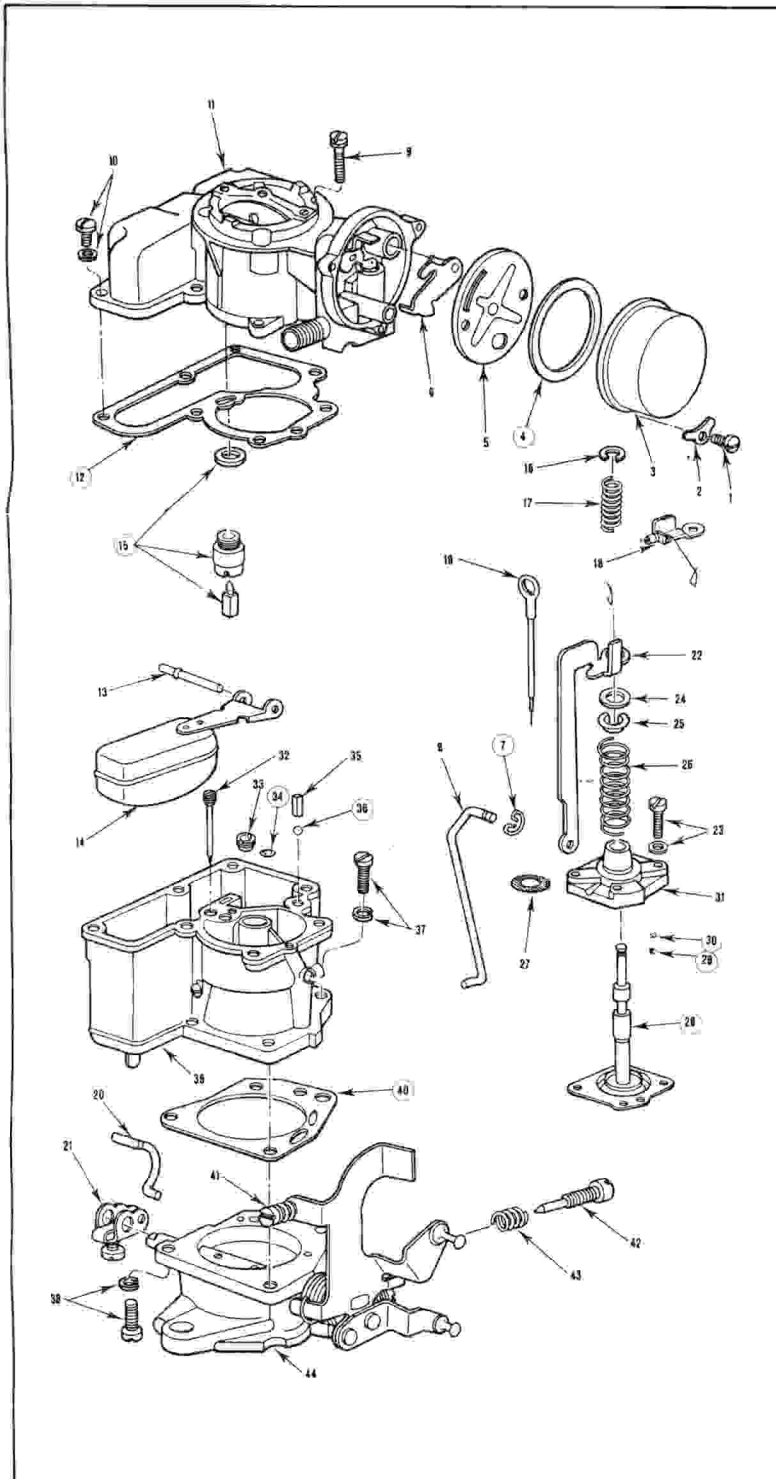
SPECIAL INSTRUCTIONS

PUMP INTAKE CHECK BALL — Make sure check ball is operating freely and retainer is in place.

PUMP DIAPHRAGM HOUSING — Install the diaphragm cover screws in the diaphragm cover making sure the edges of the diaphragm (28) are not wrinkled then lower into position and tighten screws evenly and securely.

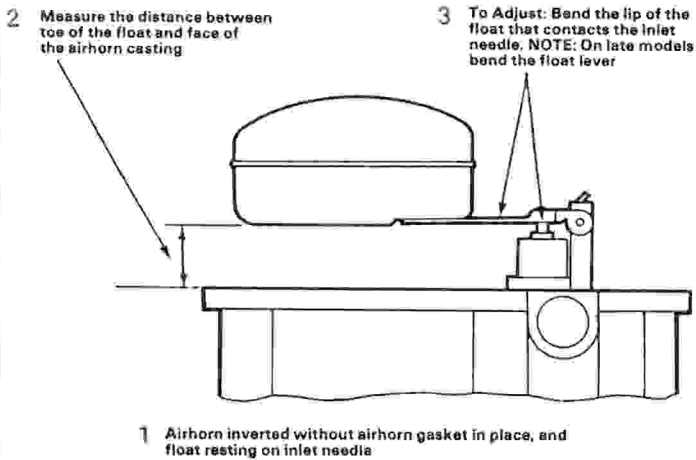
PUMP LINK ADJUSTMENT — Prior to installing metering rod, assembly and upper pump spring back out the throttle stop screw and hold throttle plate closed. Depress the diaphragm stem so it bottoms the diaphragm in fuel bowl. The diaphragm stem shoulder above spring retainer (25) should be parallel to the top surface of pump link (22). To adjust bend pump connector link, if the parallel setting cannot be obtained check parts for wear and disfigurement and replace as required.

NOTE: On models with non-adjustable pump link, the parallel setting cannot be obtained check parts for wear and disfigurement and replace as required.



CARBURETOR ADJUSTMENTS

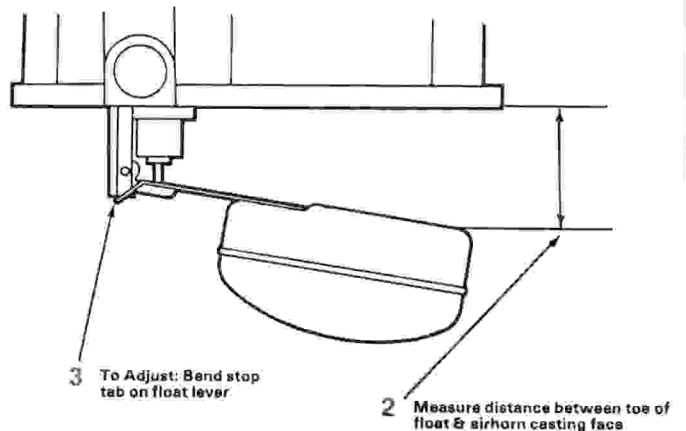
CAUTION: DO NOT EXERT PRESSURE ON VITON INLET NEEDLE



1 Airhorn inverted without airhorn gasket in place, and float resting on inlet needle

FIG. 1 - DRY FLOAT ADJUSTMENT

1 Airhorn held in upright position without airhorn gasket in place, and the float hanging free



2 Measure distance between toe of float & airhorn casting face

FIG. 2 - FLOAT DROP ADJUSTMENT

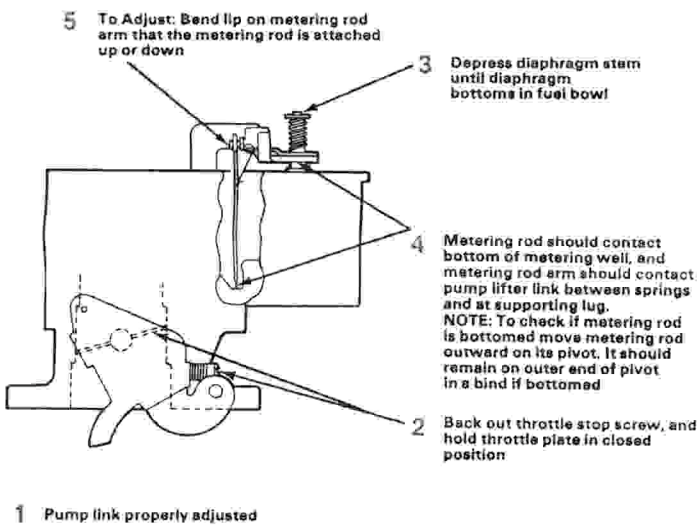


FIG. 3 - METERING ROD ADJUSTMENT

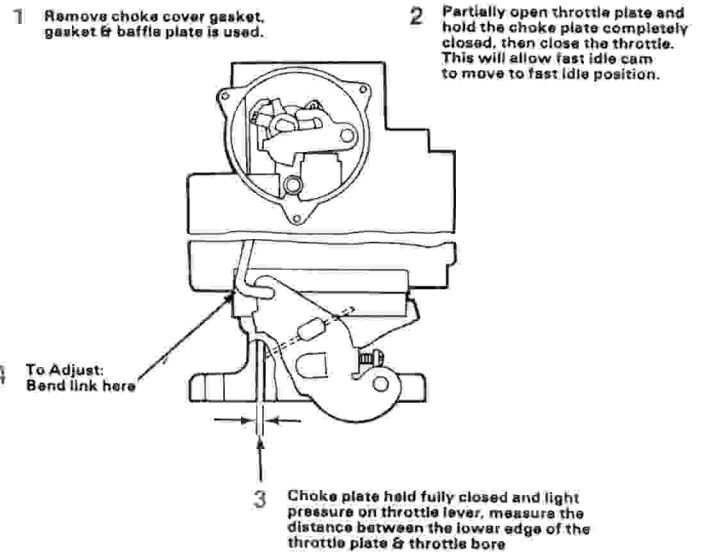


FIG. 4 - FAST IDLE ADJUSTMENT

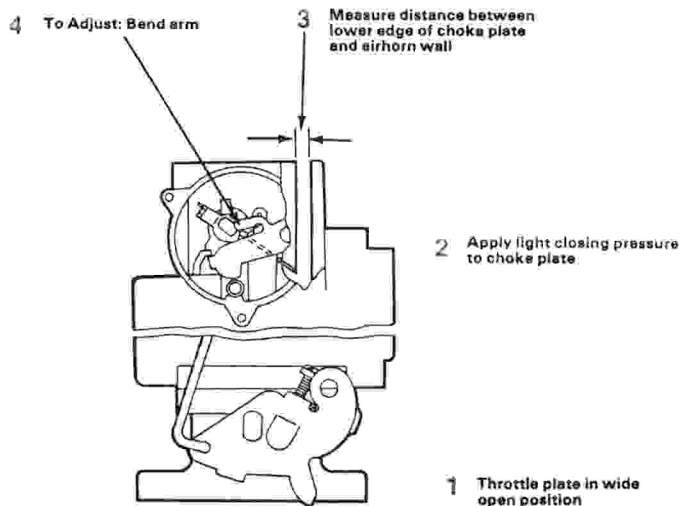


FIG. 5 - CHOKE UNLOADER ADJUSTMENT (INSIDE CHOKE HOUSING)

1 Rotate cover and align ref mark on cover with one notch rich mark on choke housing

2 Rotate cover (1) notch in either direction if required, for proper engine warm up

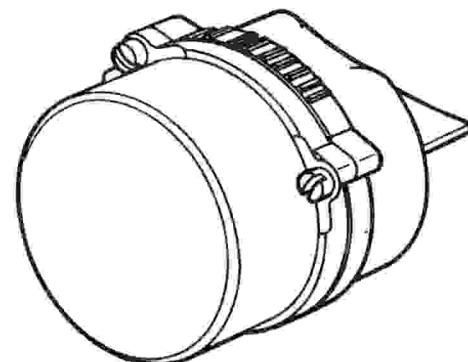


FIG. 6 - CHOKE ADJUSTMENT

ADJUSTMENT SPECIFICATIONS

YEAR & MAKE		STEEL TIP NEEDLE DRY FLOAT ADJ.	VITON TIP NEEDLE DRY FLOAT ADJ.	FLOAT DROP ADJ.	FAST IDLE ADJ.	UNLOADER ADJ.	
1970-71	AMC 199", 232", 258" Engs.	29/64"	15/32"	1-1/4"		19/64"	
1968-69	BRONCO 170", 240" Engs.	Manual Trans.	7/32"	15/32"	1-1/4"	9/32"	
		Automatic Trans.	7/32"	15/32"	1-1/4"	3/64"	21/64"
1970	BRONCO	7/32"	15/32"	1-1/4"	1/32"	9/32"	
1971	BRONCO	Manual Trans.	3/8"	15/32"	1-1/4"	7/64"	9/32"
1967	CAMARO 6 Cylinder	7/32"	15/32"	1-3/16"		1/4"	
1964-65	CHECKER CAB 6 Cylinder	7/16"	15/32"	1-1/4"	3/64"	1/4"	
1964-66	CHEVELLE 6 Cylinder with A.I.R.	5/16"	7/16"	1-1/4"		1/4"	
1967	CHEVELLE 6 Cylinder with A.I.R.	7/32"	15/32"	1-3/16"		1/4"	
1937-56	CHEVROLET & TRUCK. Carb. No's. 756s, 787s, 788s, 789s Carb. No's. 964s, 966s, 2100s Carb. No's. 965s, 967s, 2101s	5/16"	15/32"	1-1/4"	5/64"	3/16"	
		9/32"	15/32"	1-1/4"			
		9/32"	15/32"	1-1/4"	3/64"	1/4"	
1957-62	CHEVROLET & TRUCK. Carb. No. 3211s	-	15/32"	1-1/4"	3/64"	1/4"	
1964-66	CHEVROLET 6 Cylinder with A.I.R.	5/16"	7/16"	1-3/16"	1/64"	17/32"	
1967	CHEVROLET 6 Cylinder with A.I.R.	7/32"	15/32"	1-3/16"		1/4"	
1962-66	CHEVY II 4 Cylinder	5/16"	7/16"	1-3/16"			
1967	CHEVY II 4 Cylinder	7/32"	15/32"	1-3/16"		1/4"	
1963-66	CHEVY II 6 Cylinder with A.I.R.	5/16"	7/16"	1-3/16"	1/32"	1/4"	
1967	CHEVY II 6 Cylinder with A.I.R.	7/32"	15/32"	1-3/16"		1/4"	
1964-66	CHEVROLET VAN 4 Cyl. & 6 Cyl.	5/16"	7/16"	1-3/16"			
1966	CHEVROLET TRUCK 6 Cylinder with A.I.R.	5/16"	7/16"	1-1/4"			
1967	CHEVROLET TRUCK 4 Cyl. & 6 Cyl. with A.I.R.	7/32"	15/32"	1-3/16"		1/4"	
1967	COMET 6 Cylinder, IMCO 200" Eng.	7/32"	15/32"	1-1/4"	1/16"	9/32"	
1971	COMET 6 Cylinder, 200" Eng. 170" Eng.	3/8"	15/32"	1-1/4"	5/32"	1/4"	
		3/8"	15/32"	1-1/4"	7/64"	9/32"	
1967	FAIRLANE 6 Cylinder IMCO 200" Eng.	7/32"	15/32"	1-1/4"	1/16"	9/32"	
1967-69	FALCON 6 Cylinder 170" & 200" Eng's.	7/32"	15/32"	1-1/4"	1/16"	9/32"	
1970	FALCON 6 Cylinder 200" Eng.	3/8"	15/32"	1-1/4"	1/32"	1/4"	
1968-69	FORD 240" Eng.	7/32"	15/32"	1-1/4"	3/64"	9/32"	
1970	FORD 240" Eng.	3/8"	15/32"	1-1/4"	1/32"	1/4"	
1971	FORD 240" Eng.	3/8"	15/32"	1-1/4"	13/64"	1/4"	
1968-69	FORD & TRUCK 170", 240" Engs.	Manual Trans.	7/32"	15/32"	1-1/4"	1/32"	9/32"
		Automatic Trans.	7/32"	15/32"	1-1/4"	3/64"	21/64"
1970-71	FORD TRUCK 170", 240", 300" Engs.	7/32"	15/32"	1-1/4"	1/32"	9/32"	
1964-65	G.M.C. VAN 6 Cylinder	5/16"	7/16"	1-3/16"			
1966-67	G.M.C. VAN 6 Cylinder	7/32"	15/32"	1-3/16"		1/4"	
1964-66	G.M.C. VAN 4 Cylinder	5/16"	7/16"	1-3/16"			
1966-67	G.M.C. VAN 4 Cylinder with A.I.R.	7/32"	15/32"	1-3/16"		1/4"	
1950-53	I.H.C. TRUCK Carb. No's. 735s, 740s, 879s Carb. No's. 736s, 741s	3/8"	3/8"	1-3/16"			
		5/16"	15/32"	1-3/16"			
1951-54	KAISER-FRAZER 4 Cyl. & 6 Cyl.	9/32"	15/32"	1-3/16"			
1950-71	KAISER-JEEP & WILLYS 4 Cyl. & 6 Cyl.	5/16"	15/32"	1-1/4"			
1970	MAVERICK 170", 200" Eng's.	3/8"	15/32"	1-1/4"	1/32"	5/16"	
1971	MAVERICK 170", 200" Eng's.	3/8"	15/32"	1-1/4"	5/32"	1/4"	
1967	MUSTANG 6 Cylinder IMCO 200" Eng.	7/32"	15/32"	1-1/4"	1/16"	9/32"	
1970	MUSTANG 200" Eng.	3/8"	15/32"	1-1/4"	1/32"	1/4"	
1951-52	NASH STATESMAN	1/2"	1/2"	1-1/4"	1/16"	9/32"	
1951-62	NASH RAMBLER & AMERICAN	1/2"	1/2"	1-1/4"	1/16"	9/32"	
1954-55	NASH STATESMAN	3/8"	3/8"	1-1/4"	1/32"	7/16"	
1966	OLDSMOBILE 6 Cylinder with A.I.R.	5/16"	7/16"	1-3/16"		1/4"	
1967	OLDSMOBILE 8 Cylinder with A.I.R.	7/32"	15/32"	1-1/4"		1/4"	

A.I.R. - AIR INJECTION REACTOR
TRANS. - TRANSMISSION